

Sales and Service for the U.S., Canada and Mexico



**Service
24 - 7**



Osmat Technologies / Porta North America has over \$1mm of spare parts, and technicians with over 50+ years of technician experience!



Osmat Technology LLC
65A Louis St – Newington, CT 06111
P: 860-665-9996 F: 860-666-8333
porta.north.america@snet.net
www.mecolpress.com

Represented in WI & MI-up by:
Manske Machinery
10050 W. Beloit Rd, Greenfield, WI 53228
P: 414-543-8800 F: 414-543-5433
www.manskemachinery.com

Performance Oriented Machinery



**Eccentric
press
'SOV'**



**Screw press 'Pordoi'
1650 ton**



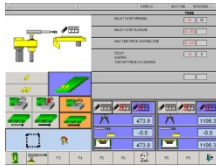
Complex shapes & core configurations
Near net-shape forgings
Leader in quick die / core changeover
Unsurpassed rigidity and reliability
Wide variety of presses, up to 2000 ton
Press and cell automation specialists
Hot- or cold- forging processes
**40 years of world-class
technology - 10-3-11**

**Forging, Heading
& Trim Presses**

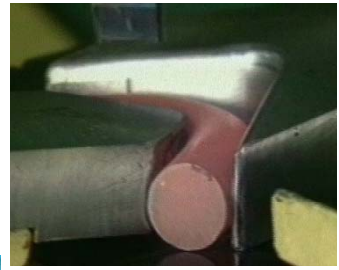
Hydraulic Press / Subpress



Interactive Operator Interface



- Valve/Fitting
- Car/Truck
- Appliance
- Ammunition
- Fastener
- Medical



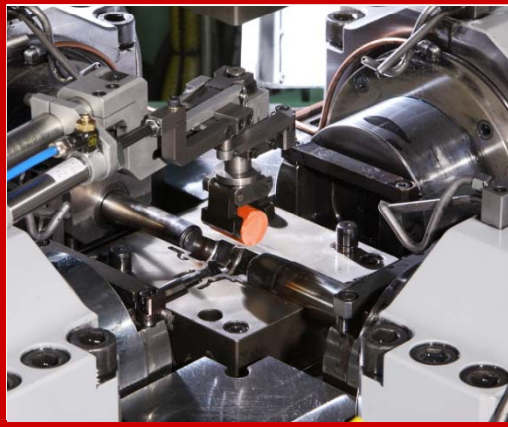
- Processes-**
- Hot Forging
 - Cold Forming
 - Upset / Heading
 - Stamping / Punch



Completely Automated Turn-key Systems



Bar Feed – Cut-off – Graphitizing – Furnace – Forge – Trim



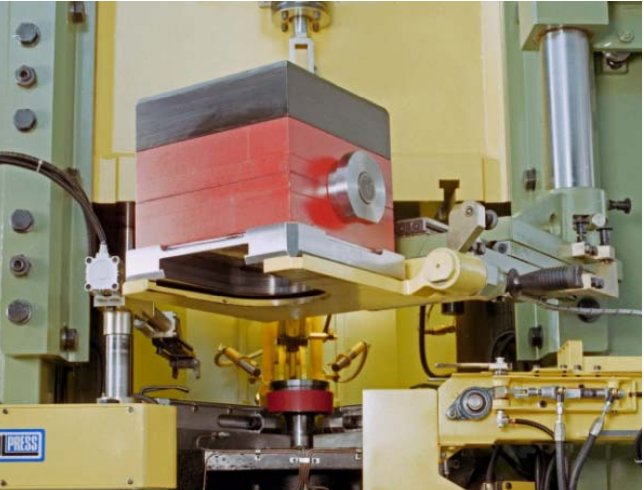
Sub-presses

for horizontal extrusions (cores). Up to four core slides with independent (and fast) angle adjustment for net-shape forging.
Hydraulic or Mechanical



Quick-change dies

Our patented system – with complete, semi-automatic changeover in minutes rather than hours - means lower lot sizes and higher flexibility.



Trim Press

Designed for removing flash from forged components, they are also suitable for broaching, drawing, and punching in various materials. The 'S' series has four stations for single or multiple-part processing, and can be robot/vision loaded. The 'PO' series does not have a rotating table, and is manually loaded.

