

# West Prairie Point 3rd Addition

Located in a peaceful setting, this quiet neighborhood is an easy commute to downtown St. Cloud, MN. West Prairie Point is near to shopping, dining and several colleges.

West Prairie Point offers quality constructed homes with a large selection of floor plans and features – all at an affordable price. We will build your home based on your needs and choice of options.

Aho Sales Office

Tue & Wed: 1 pm-4 pm

Or by appointment

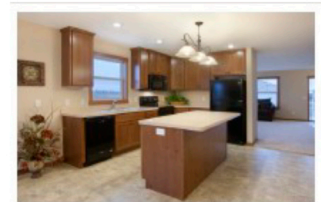
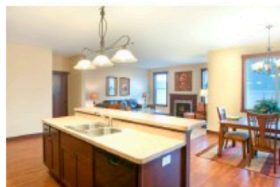
Address	Sq. Ft.	Beds/Baths/Garages	Price
---------	---------	--------------------	-------

2281 -72nd Ave. N	2069 sq. ft.	3 / 2 / 3	\$329,900
2273 - 72nd Ave N	1802 sq. ft.	3 / 2 / 3	\$293,900
2257 - 72nd Ave N	1804 sq. ft.	3 / 2 / 3*	\$304,900

\*Two Car with Tandem

## Included Amenities:

- ENERGY certified (HERS)
- 96% efficient gas furnace
- Air conditioning
- Marathon 80 gallon water heater
- Oak, alder, maple mission-style cabinets.
- Whirlpool appliances—range, dishwasher, micro hood and refrigerator (choice black or white)
- Premium solid oak or poplar woodwork.
- Designer interior paint
- Custom cabinetry



Personalize your home colors– carpet/flooring, countertops, interior colors, & exterior colors

320.760.6975

www.AhoNorthwest.com

2281 72nd Ave N

St Cloud, MN 56303

*West Prairie Point* 3rd Addition

**322nd St and 72nd Avenue N St. Cloud, MN**

**From Veterans Drive continue onto Country Highway 4, Turn West onto 322nd St, Turn South onto 72nd Ave North**



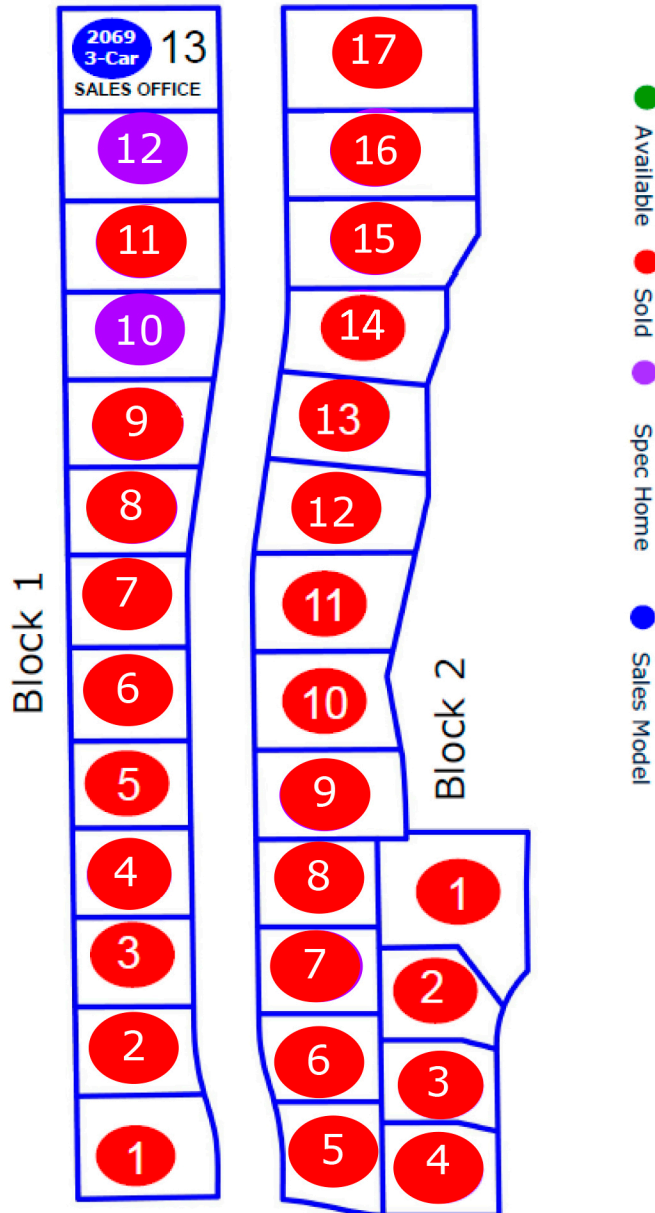
**Schools**

Westwood Elementary  
North Junior High  
Apollo High School

Aho Sales Office

Tue & Wed: 1 pm-4 pm

Or by appointment



320.760.6975

www.AhoNorthwest.com

2281 72nd Ave N

St Cloud, MN 56303