

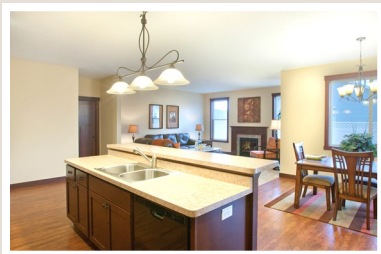
Plan/SqFt	Level	Bed/Bath	Base Price
1648	single-level	3 bed 2 bath	\$232,900
1802	single-level	3 bed 2 bath	\$241,900
1804	single-level	3 bed 2 bath	\$250,900
1981	single-level	3 bed 2 bath	\$258,900
2069	single-level	3 bed 2 bath (+den)	\$262,900

Located in a peaceful setting, this quiet neighborhood is an easy commute to downtown St. Cloud, MN. West Prairie Point is near to shopping, dining and several colleges.

West Prairie Point offers quality constructed homes with a large selection of floor plans and features—all at an affordable price. We will build your home based on your needs and choice of options.

Included Amenities:

- ENERGY certified (HERS)
- 96% efficient gas furnace
- Air conditioning
- Marathon 80 gallon water heater
- Oak, alder, maple mission-style cabinets
- Whirlpool appliances—range, dishwasher, micro hood and refrigerator (choice black or white)
- Premium solid oak or poplar woodwork
- Designer interior paint
- Custom cabinetry



Aho Sales Office

Tue & Wed: 1 pm—4 pm

or by appointment

Personalize your home colors—Carpet/Flooring, Countertops, Interior colors, & Exterior colors

Please see a sales agent for a large selection of available upgrades

320.257.0606

www.AhoNorthwest.com

2281 72nd Avenue N •

St. Cloud, MN 56303

322nd St and 72nd Avenue N St. Cloud, MN

From Veterans Drive continue onto County Highway 4, Turn West onto 322nd St, Turn South onto 72nd Avenue North.



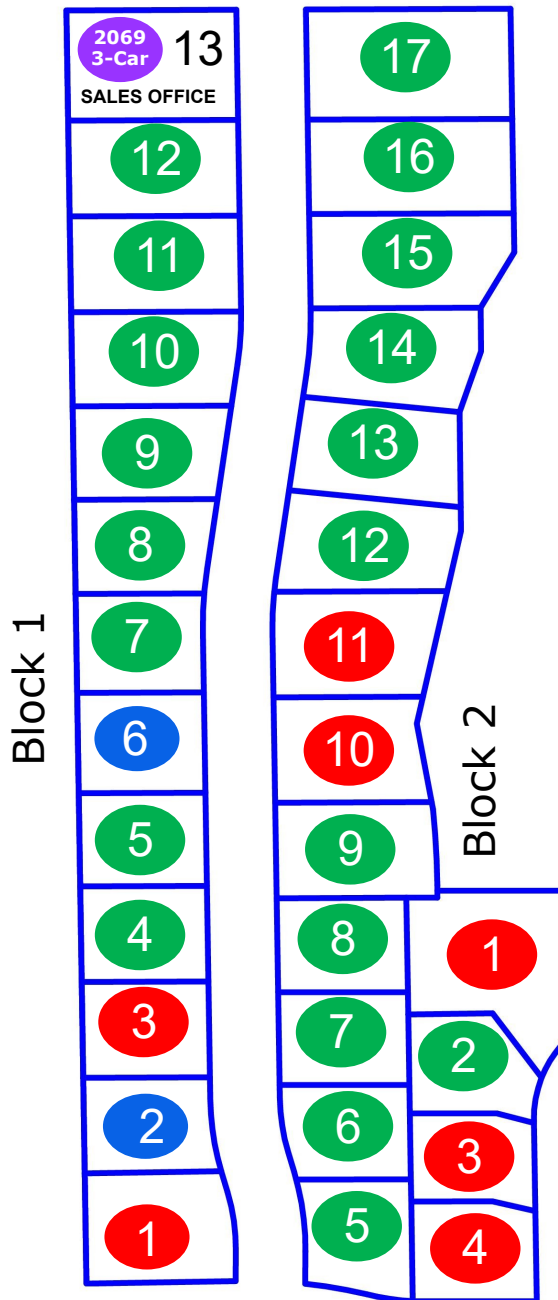
Schools

Westwood Elementary
North Junior High
Apollo High School

Aho Sales Office

Tue & Wed: 1 pm—4 pm

or by appointment



320.257.0606

www.AhoNorthwest.com

2281 72nd Avenue N



St. Cloud, MN 56303