

899

NORTHGATE DRIVE

SAN RAFAEL, CALIFORNIA

FOR LEASE

±1,050 RSF

UP TO

±7,703 RSF



Whitney Strotz

Senior Managing Director

+1 415 451 2406

whitney.strotz@cushwake.com

LIC #01351397

Bryan Vidinsky

Associate Vice President

+1 415 451 2409

bryan.vidinsky@cushwake.com

LIC #01858696

900 Larkspur Landing Circle, Suite 295

Larkspur, CA 94939

T: +1 415 485 0500

F: +1 415 485 1341

cushmanwakefield.com



**CUSHMAN &
WAKEFIELD**

www.899Northgate.com

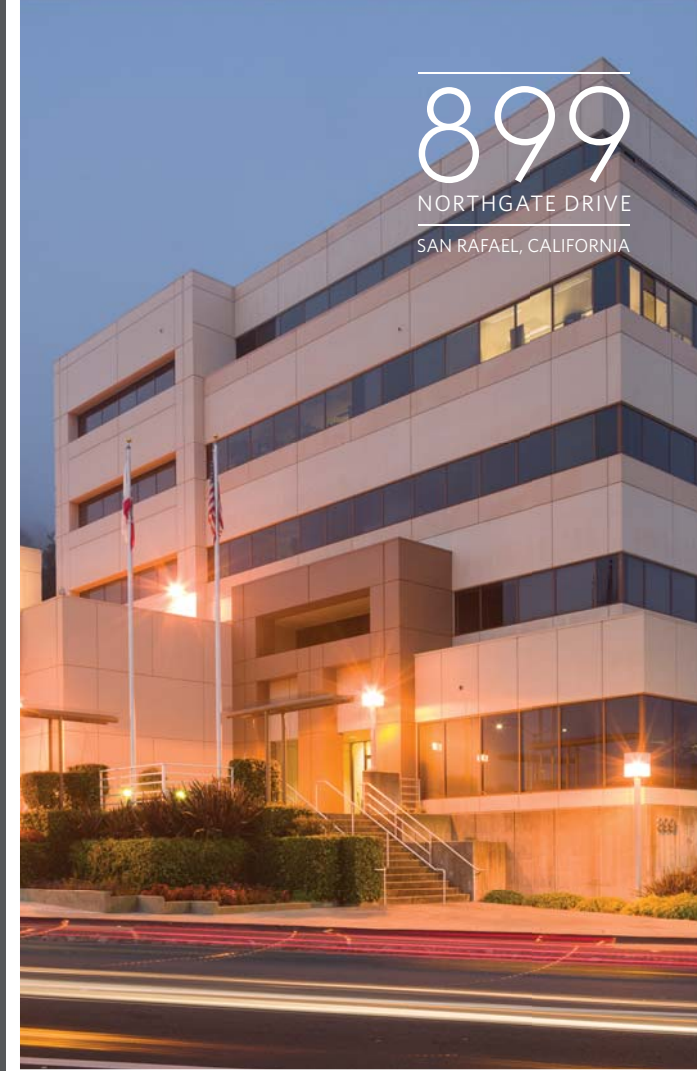
PROPERTY HIGHLIGHTS

899 Northgate Drive offers a true Class A office environment with prominent intersection identity, attractive landscaping, upgraded common areas, attractive hillside views, and ample onsite covered parking.

Centrally located within San Rafael, the building enjoys exceptional identity at the intersection of Northgate Drive and Las Gallinas Avenue. The property is ideally situated directly across the street from Northgate Mall and just a half mile from the entrance to Highway 101.

Individual office suites currently range in size from approximately $\pm 1,050$ to $\pm 7,703$ rentable square feet, suites feature open floor plans with abundant natural light and attractive outlooks.

| | |
|------------------|---|
| ADDRESS | 899 Northgate Drive San Rafael, CA 94903 |
| YEAR BUILT | 1985 |
| USE | Office |
| BUILDING AREA | $\pm 55,137$ square feet |
| STORIES | Five |
| SITE AREA | 1.60 acres / $\pm 55,137$ square feet |
| PARKING RATIO | 3.7 / $\pm 1,000$ square feet |
| ZONING | O (Office), Medical Use Allowed |
| AVAILABILITIES | From $\pm 1,050$ RSF up to $\pm 7,703$ RSF |
| PRICING | From \$2.95 - \$3.50 PSF, FS |
| BUILDING SIGNAGE | Exterior building signage available |



Whitney Strotz
Senior Managing Director
+1 415 451 2406
whitney.strotz@cushwake.com
LIC #01351397

Bryan Vidinsky
Associate Vice President
+1 415 451 2409
bryan.vidinsky@cushwake.com
LIC #01858696

900 Larkspur Landing Circle, Suite 295
Larkspur, CA 94939
T: +1 415 485 0500
F: +1 415 485 1341

cushmanwakefield.com

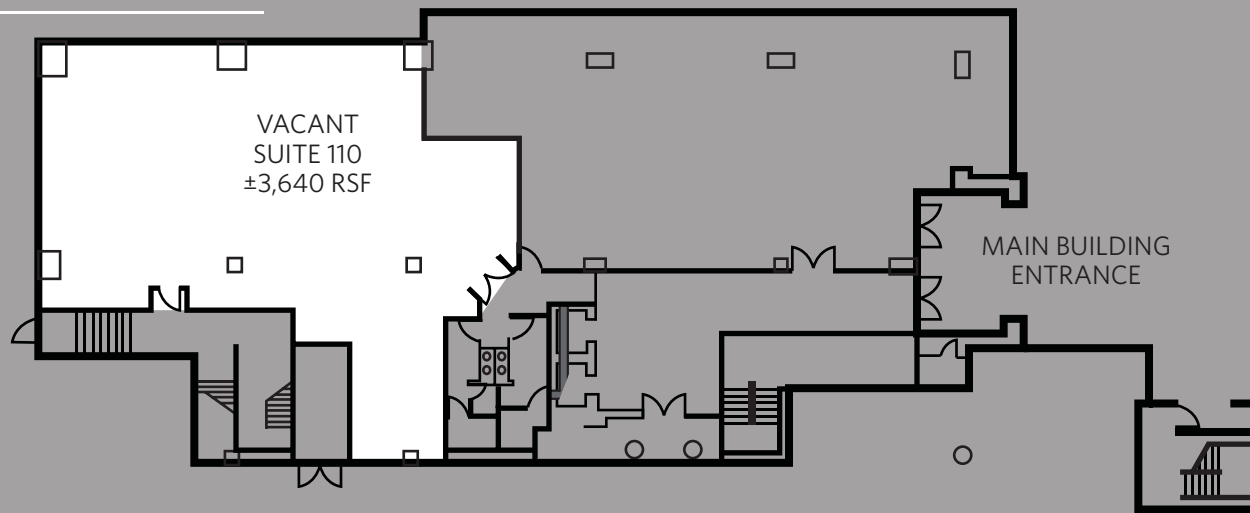
 **CUSHMAN & WAKEFIELD**
www.899Northgate.com

The above information, while not guaranteed, has been secured from sources we believe to be reliable. Submitted subject to error, change or withdrawal. An interested party should verify the status of the property and in the information herein.

AVAILABLE

FIRST FLOOR

Suite 110
±3,640 RSF
Conference Room,
Private office,
Kitchenette

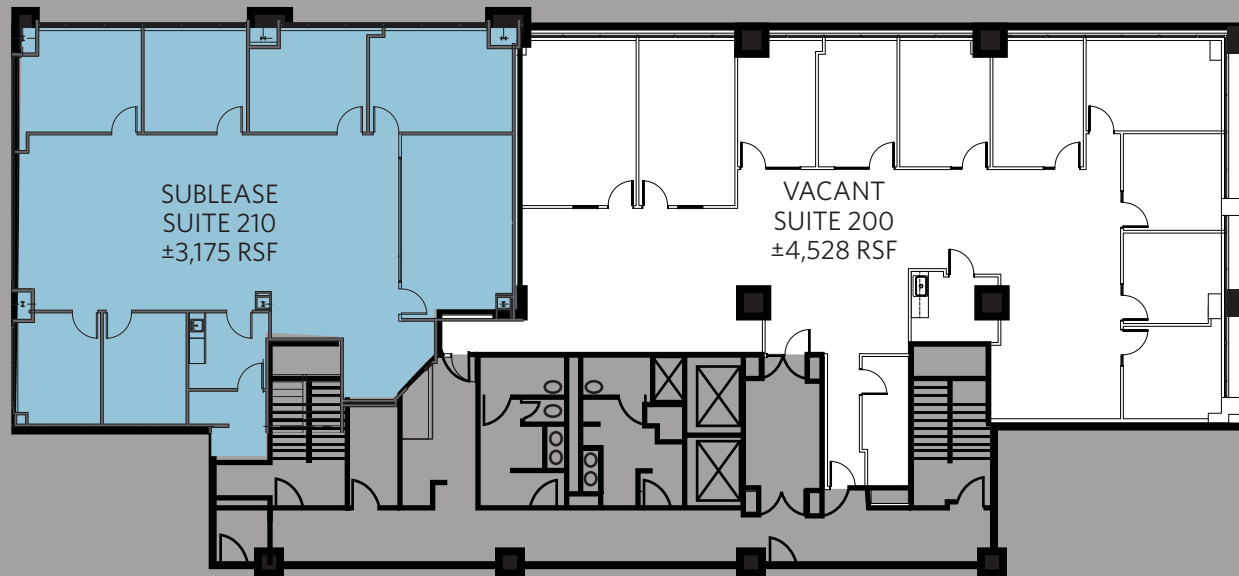


SECOND FLOOR

***Suite 200**
±4,528 RSF
Ten private offices,
Kitchenette

***Suite 210**
±3,175 RSF
Six private offices,
Conference Room

***Suite 200 + 210**
*can be combined for a
total of ±7,703 RSF*



899

NORTHGATE DRIVE
SAN RAFAEL, CALIFORNIA



Whitney Strotz
Senior Managing Director
+1 415 451 2406
whitney.strotz@cushwake.com
LIC #01351397

Bryan Vidinsky
Associate Vice President
+1 415 451 2409
bryan.vidinsky@cushwake.com
LIC #01858696

900 Larkspur Landing Circle, Suite 295
Larkspur, CA 94939
T: +1 415 485 0500
F: +1 415 485 1341
cushmanwakefield.com

CUSHMAN & WAKEFIELD
www.899Northgate.com

The above information, while not guaranteed, has been secured from sources we believe to be reliable. Submitted subject to error, change or withdrawal. An interested party should verify the status of the property and in the information herein.

AVAILABLE

899

NORTHGATE DRIVE

SAN RAFAEL, CALIFORNIA

THIRD FLOOR

***Suite 304**

±1,271 RSF

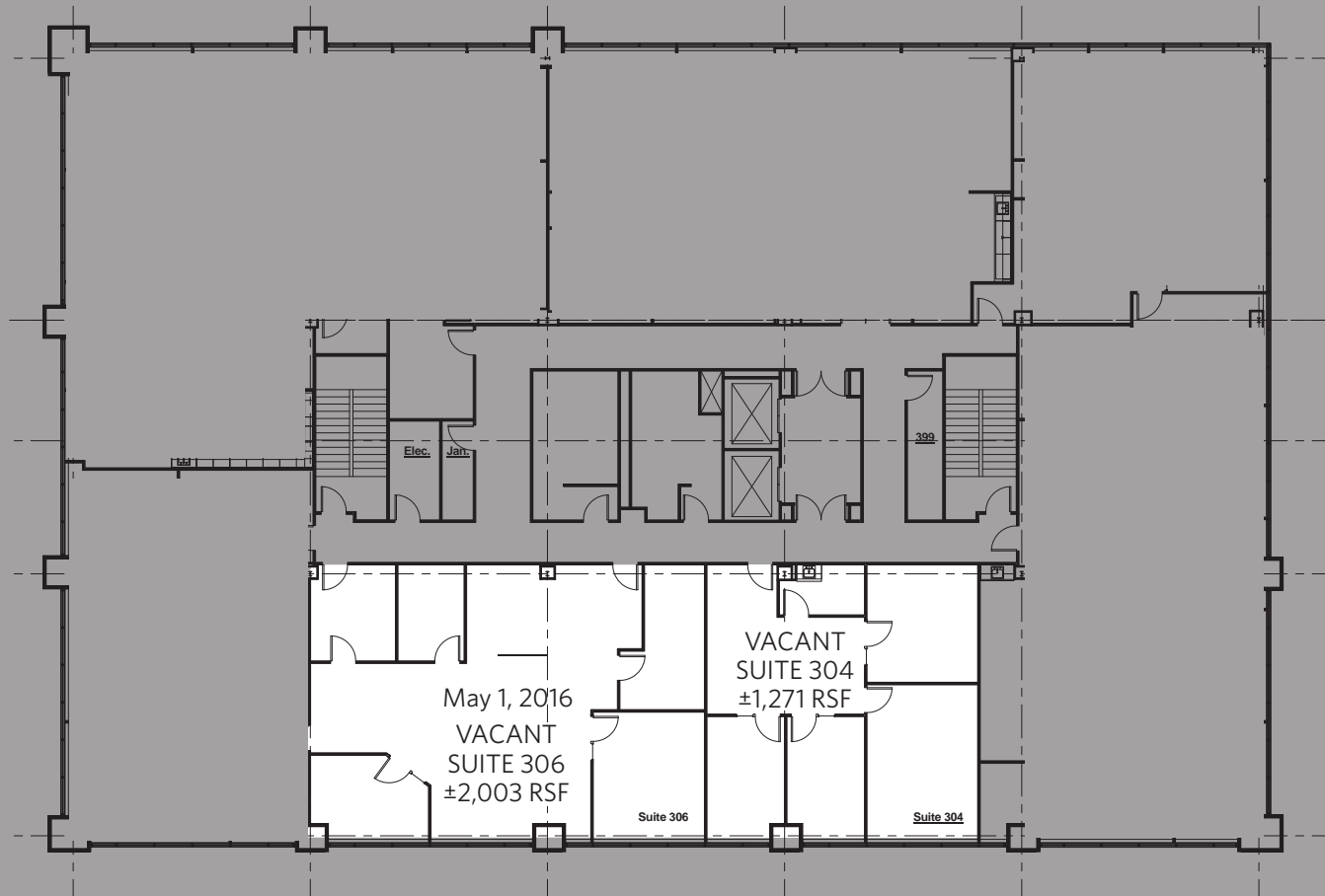
Three private offices,
Conference Room,
Kitchenette

***Suite 306**

±2,003 RSF

Available May 1, 2016
Four private offices,
server room,
Kitchenette

***Suite 304 + 306**
can be combined for a
total of ±3,274 RSF



Whitney Strotz

Senior Managing Director

+1 415 451 2406

whitney.strotz@cushwake.com

LIC #01351397

Bryan Vidinsky

Associate Vice President

+1 415 451 2409

bryan.vidinsky@cushwake.com

LIC #01858696

900 Larkspur Landing Circle, Suite 295

Larkspur, CA 94939

T: +1 415 485 0500

F: +1 415 485 1341

cushmanwakefield.com



www.899Northgate.com

The above information, while not guaranteed, has been secured from sources we believe to be reliable. Submitted subject to error, change or withdrawal. An interested party should verify the status of the property and in the information herein.

AVAILABLE

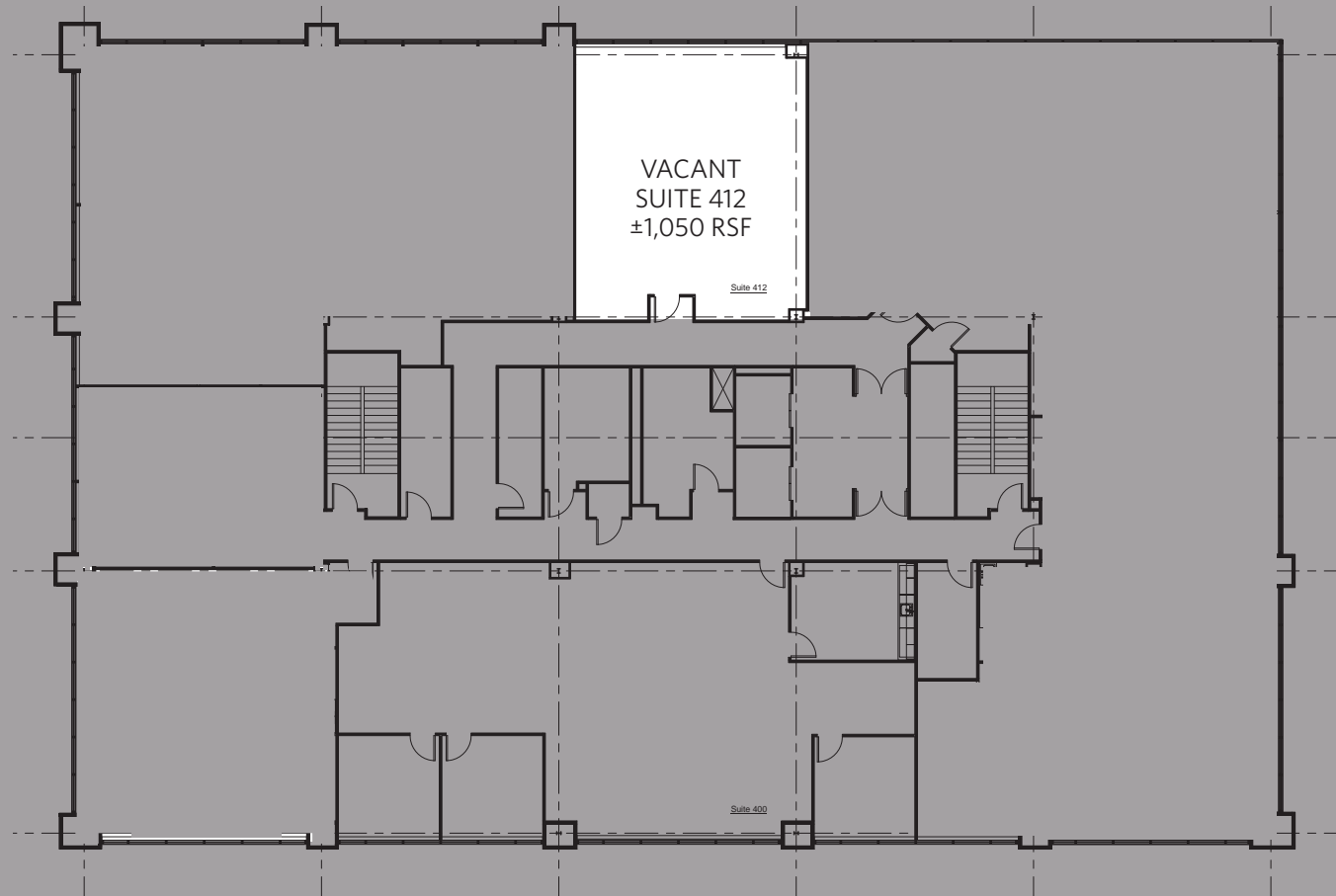
899

NORTHGATE DRIVE

SAN RAFAEL, CALIFORNIA

FOURTH FLOOR

Suite 412
±1,050 RSF
Open area



Whitney Strotz
Senior Managing Director
+1 415 451 2406
whitney.strotz@cushwake.com
LIC #01351397

Bryan Vidinsky
Associate Vice President
+1 415 451 2409
bryan.vidinsky@cushwake.com
LIC #01858696

900 Larkspur Landing Circle, Suite 295
Larkspur, CA 94939
T: +1 415 485 0500
F: +1 415 485 1341

cushmanwakefield.com

CUSHMAN & WAKEFIELD

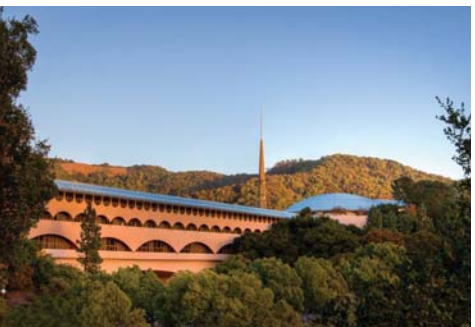
www.899Northgate.com

The above information, while not guaranteed, has been secured from sources we believe to be reliable. Submitted subject to error, change or withdrawal. An interested party should verify the status of the property and in the information herein.

NEARBY AMENITIES

899
NORTHGATE DRIVE
SAN RAFAEL, CALIFORNIA

899
NORTHGATE DRIVE
SAN RAFAEL, CALIFORNIA



Whitney Strotz
Senior Managing Director
+1 415 451 2406
whitney.strotz@cushwake.com
LIC #01351397

Bryan Vidinsky
Associate Vice President
+1 415 451 2409
bryan.vidinsky@cushwake.com
LIC #01858696

900 Larkspur Landing Circle, Suite 295
Larkspur, CA 94939
T: +1 415 485 0500
F: +1 415 485 1341
cushmanwakefield.com

CUSHMAN & WAKEFIELD
www.899Northgate.com

The above information, while not guaranteed, has been secured from sources we believe to be reliable. Submitted subject to error, change or withdrawal. An interested party should verify the status of the property and in the information herein.